

16.9 Setra peritrocha. Arnim 4 spores

Some giant spores. Normal 35-36 x 17-18
Spore body symmetrical, but attached off centre. setae < 160 long, often in
a unilateral bundle 51+262 arizonense ✓

Conidia v. small apothecia 380 diam, dextrorotatory-shaggy at edge

asci 95-100 x 13-16 8-sp uniseriate 10-11 x 7

Paras cylindrical, 3. 1st or 2nd broader at tip.
Hyaline blue int I ? ✓

Dothidea 19-21 x 11-11.5 carpent ✓

Ped. decipiens ✓ Asc. immissus ✓

Sporangia v. small pseudothecia 160 diam

Spores in 2-celled halves, so 4 ER* 30-32 x 4

on short asci 95-100 x 13-15 minima ✓ (check later)

* some slight taper? halving in ascus, biserial

21.10 Delitschia sp 57-61 + 22-23 winters ✓

Saccardo versicolor ✓ A. arizonense ✓

P. decipiens ✓ Conidia sp. sp 12.5-13 x 8

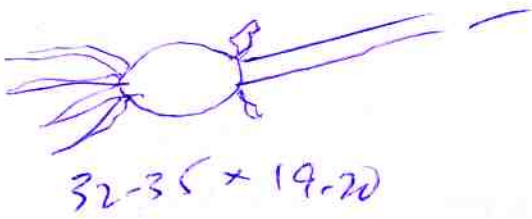
uniseriate. Asc. 90 x 16 hyaline apothecia < 350 diam

21/10

Pentecost - no base N side.

Zygopleura zygopleura

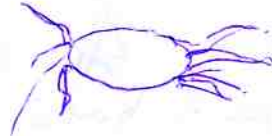
f



32-35 x 19-20

connector 5 diam

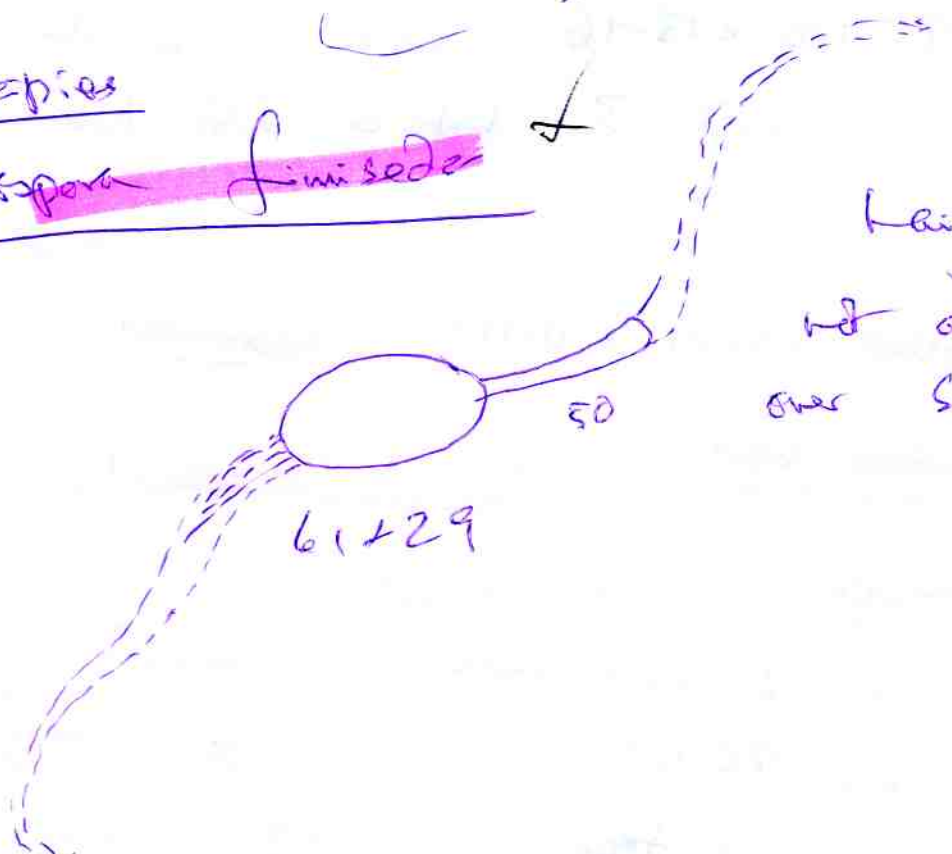
x ca 220



P. deepies

Pedospira finisidera

f



61 x 29

50

hairy pentecost

not aggregated, all over surface < 70

Rehydrated 27.1

3/1-2 Large forams ^{branch} pentecost

8-sp Annim

sp variable 48-55-61 x 29-24-21

Annim / forams

42-

Cap. filamentifer type red. thin walled peggy

Sp. 4 ER v. small



omiserate

17-18 x 5.5-6

Pulchella ✓

2.4

Ammon ✓

very irregular in

Spore number & size

aging?

folded - brown spheres with gran

spherical spores(?) in side 11-13

Hex-ed wall not cellular ?

circled text: discarded 2.4