

26.5 Sarcosomys yellowish, small apo. 4 x 2
Spore mass 42 x 16 Spores minutely verrucate
St. hyaline 17.5 x 8 Ascii 112 x 32
Citrus ✓

28.5
31.5 Delitzschia 19.3 x 6.4 not constructed
Consecta ✓

Rhizobolus crystallinus ✓ pale small 7-9 x 6.5

Delitzschia verrucosa ✓

Sporomixella 4 ER 93.1 x 16 (87-) ✓ breaks
(check case of length)

3.6 Lasiosomys

hyaline 32 diam Setae up to 190
Spores discharged in S's, held together by gel Spores ellipsoid 21 x 12.8 (not found)
Sarcosomys citrinus ✓ 4 x 2 ✓ OK. Consecta ✓

Coprinus? Spores ellipsoid 16 x 9.5 hyaline
paras v. slightly enlarged to 8, with granular/globular contents

Asci 27 diam x ca. 190
small apothecia pinkish/pale rose.

might be immature something else.

26.6. Cop ~~heptanema~~ sphaerocytes & spores
Ascobolus verticillatus lodophanus carriers
Ascobolus finely punctate/herr. spores 19.3. 17.5 x 9.5
 Small albers-type apothecia -10
 gel all round. hawaiensis

Copris sexdecensporus Asci 10.5 x 20
 spores 13 x 8

30.6 Sporormiella 4T 42 x 10 Loganiformis

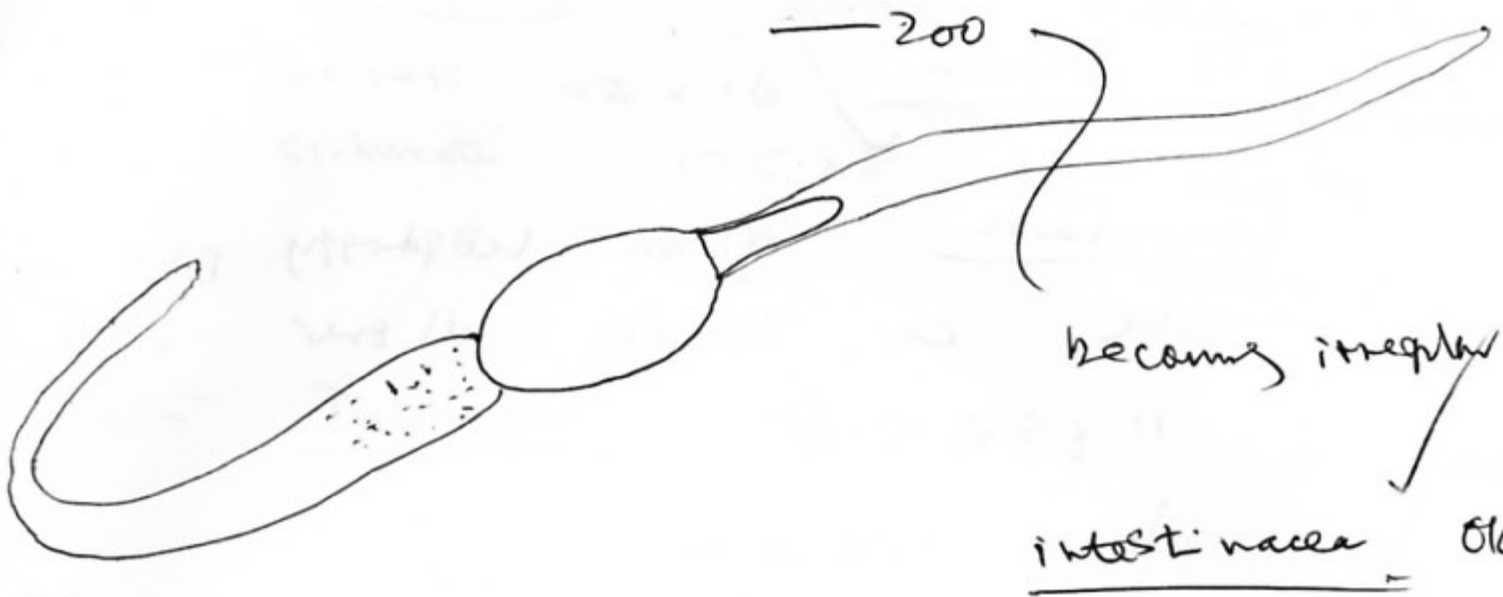
To. conicus
Podospira dequias 35.3 - 38.5 x 21

Saudivus 4 x 2 skins Cop. sexdecensporus

Trochobolites cha hispida 24 x 8

31.7 Xylrosphaera
Podospira apiculata-type spore, but keeled hairs
 ad prominent neck spore 4.8-5.1 x 25.7. 1y
 app 20 ca 8 at base, tapering to rounded apex ca 5-6
 Asci hirsute. 2y app long, broad, tapering
stramineus

24 spp ca 125 x 15



Cap. sexdecemsporus

Trichodactylus 21 x 8

Sacc. citrinus

Sch. vestigata

brispoda

8.8 Sch. conicum

Lodoporus canis

Protopar

41.5-45 x 25.5-26
-48.2

by app 19-20 x 6

2 spp clear in II, no
interval stroke ca 100 long

check myrformis No.
of intestinales? ✓

Cap. sexdecemsporus

T. brispoda

Delitschia spae 12.8 x 6



marcelii ?

11.8

P. interstranea ✓ Sch. foveola
T. hirsuta ✓

Coniochaeta globose ledgedgedy peri
setae ca 30-40 all over
11 x 9.5 x 6

Asci 115 x 11

19.8

Xylospora ✓ I. canens

Cop. setulosi 13-15 x 8 ellipsoid, str. exc g.p.
heptanervis ✓

Coniochaeta 9.5 x 8 x 6 short setae
8-sp Asci 110-120 x 9-11 all over.

Pro interstranea ✓ T. hirsuta ✓

Sch. vestita ✓

24.8

I. canens ✓ P. interstranea

Coniochaeta setae at vdc only 12 x 7 x 5
etc for lignaria ✓

Sporomielia 52 x 11 parted and cell
± parallel g slit fronds pure ✓

Copelia sa-decompant ✓ (Dried 24.8)